

20,000 Hour Vane Life - Guaranteed!



VX 4.10 – 4.40 Series

ISO 9001 Certified
CE Compliant

HIGH PERFORMANCE 100% OIL-LESS VACUUM PUMPS



The new VX Series oil-less vacuum pumps take dry technology to a new level. With a **guaranteed 20,000 hour vane life** it is the closest thing to a truly maintenance-free pump.

VX Series pumps are designed to operate on a continuous basis at any point from atmospheric pressure to a vacuum level of 27" HgV. Furthermore, a vane that doesn't wear means that graphite dust is virtually eliminated from the exhaust; that means that it can be used for applications requiring clean discharge air.

The VX Series pumps are direct drive units and are supplied with a single-phase, or three-phase wide-

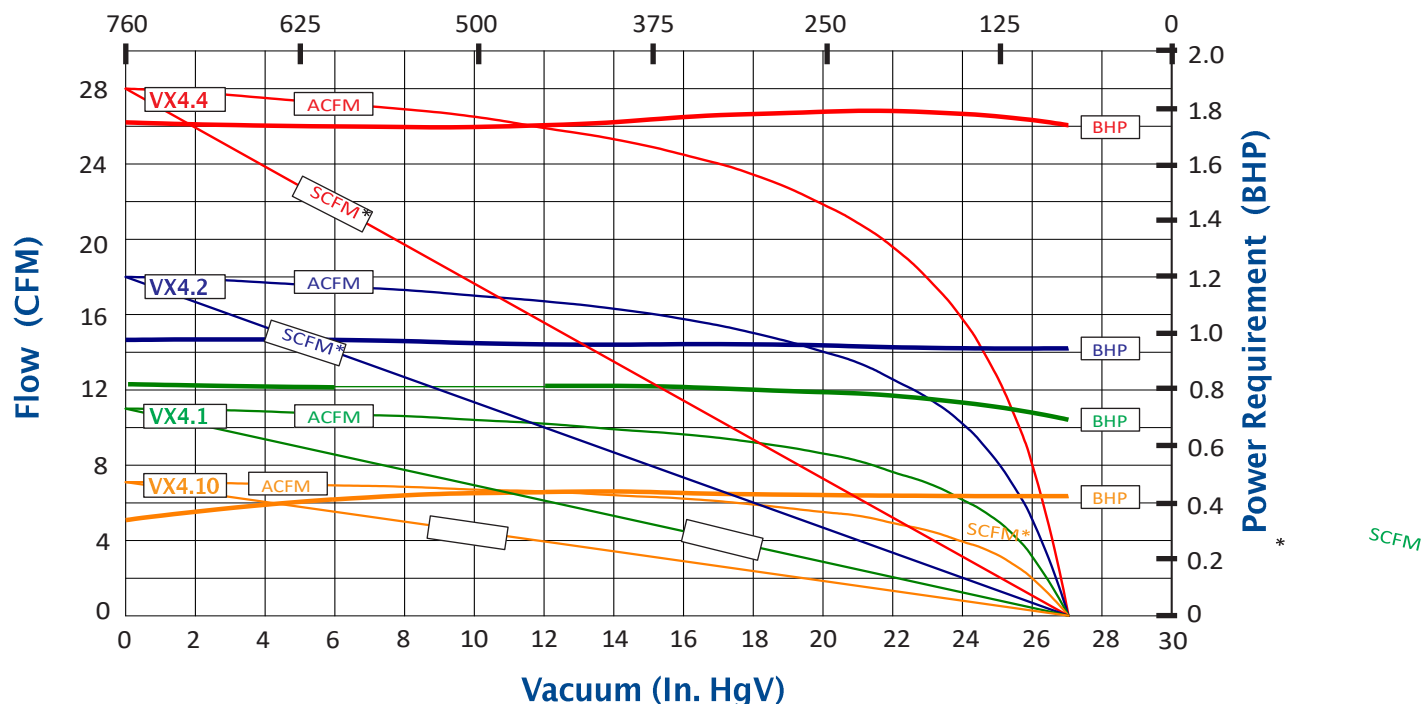
voltage-range IP-54 TEFC electric motor. Each pump is equipped with an integral vacuum relief valve, a 10 micron inlet filter, and vibration isolators as standard equipment.

Becker oil-less pumps have a reputation for being exceptionally quiet. These award-winning pumps are even quieter and cooler running than previous units. If you are an OEM, their styling will never cause embarrassment when included with your product.

These pumps are also available in various central vacuum system configurations. Pressure and combined pressure/vacuum pumps are available.



Absolute Pressure (Torr)



САНКТ-ПЕТЕРБУРГ

188508, тер. Южная часть производственной зоны Горелово, ул. Понссе, д. 18
8(800)775-49-61
www.megatechnika.ru

МОСКВА

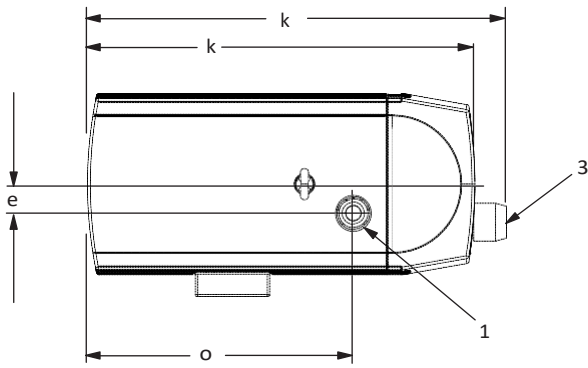
111395, ул. Юности, д.5, стр.4
8(800)100-78-28
www.megatechnika.com

УФА

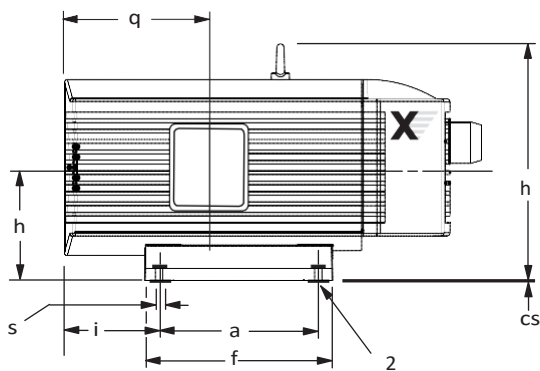
450001, ул. Комсомольская, д. 2
8(347)246-63-16
ufa@megatechnika.ru

СЕРВИС

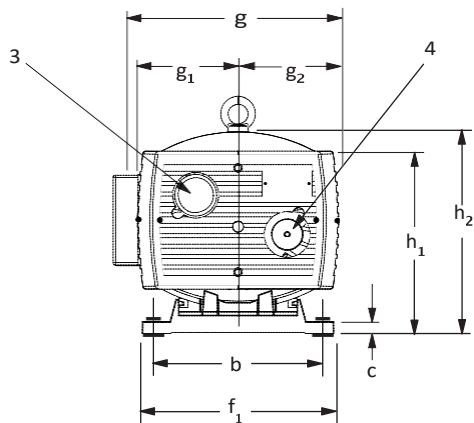
8-800-100-77-83
Звонок по России
бесплатный



Top View



Side View



End View (Opposite Motor End)



All data based on 60 Hz operation

	VX4.10	VX4.16	VX4.25	VX4.40
Flow (SCFM @ 0 in. Hg)	7.1	11.2	17.7	28.3
Horsepower (3~/1~)	0.6/0.6	.94/.88	1.2/1.5	2/1.5
Speed (RPM)	1700	1700	1700	1700
Max. Cont. Vacuum (in. HgV)	27	27	27	27
Weight (lbs.)—w/ motor*	35.2	50	57.2	84.7
Noise Level (Max. dBA)	62	64	67	72
Inlet size (BSP, inches)	G½"	G½"	G¾"	G¾"
Dimensional Data	(Inches)			
	a	6.3	7.95	8.66
b	4.41	4.92	7.48	8.19
c	0.6	0.6	0.6	0.6
cs	0.12	0.12	0.12	0.12
e	1.38	1.38	1.57	1.57
f	7.88	9.53	10.24	10.24
f ₁	5.6	6.1	9.37	9.37
g	8.11	9.1	10.23	11.03
g ₁	3.54	4.03	4.92	4.92
g ₂	3.54	4.03	4.92	4.92
h	4.21	4.45	5.51	5.51
h ₁	6.93	7.32	8.94	8.94
h ₂	7.68	8.3	10.24	10.24
h ₃	---	---	11.42	11.42
i	4.17	2.88	3.78	5.15
k	15.25	16.38	18.31	20.95
k ₁	16.9	17.8	19.89	22.53
o	10.12	11.48	11.91	14.31
q	4.84	5.97	6.81	7.56
s	0.27	0.27	0.27	0.27

Overall specifications for single phase units may vary. Contact factory for information. Manufacturer reserves right to alter data without notice.

- 1 - Inlet Port
- 2 - Vibration Isolator
- 3 - Vacuum Regulating Valve
- 4 - Exhaust Air Silencer

САНКТ-ПЕТЕРБУРГ

188508, тер. Южная часть производственной зоны Горелово, ул. Понссе, д. 18
8(800)775-49-61
www.megatechnika.ru

МОСКВА

111395, ул. Юности, д.5, стр.4
8(800)100-78-28
www.megatechnika.com

УФА

450001, ул. Комсомольская, д. 2
8(347)246-63-16
ufa@megatechnika.ru

СЕРВИС

8-800-100-77-83
Звонок по России
бесплатный