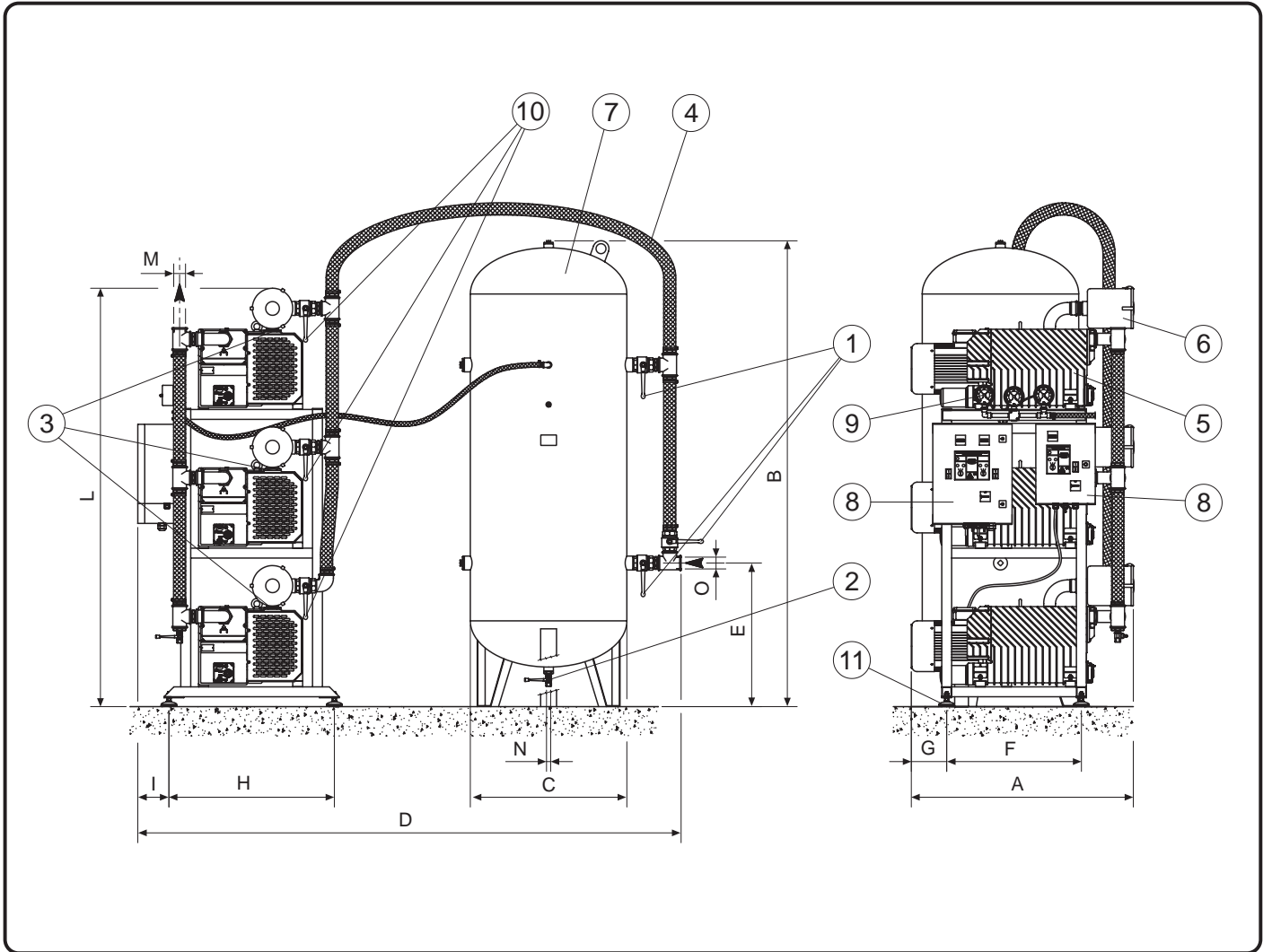


Станция UVL S 3



	(I)	(D)	(GB)	(E)	A	B	C	D	E	F	G	H	I	L	M	N	O
UVL S3 25/300V					580	1665	500	2500	600	500	40	400	170	1755	1"G	1/2"G	1-1/2"G
UVL S3 25/500V					580	2150	600	2500	708	500	40	400	170	1755	1"G	1/2"G	1-1/2"G
UVL S3 40/500V					775	2115	600	2500	705	670	40	550	245	1570	1"G	1/2"G	1-1/2"G
UVL S3 60/500V					800	2115	600	2500	705	670	40	550	245	1610	1"G	1/2"G	1-1/2"G
UVL S3 105/500V					900	2115	600	2500	705	670	115	550	245	1640	1-1/2"G	1/2"G	1-1/2"G
UVL S3 105/1000V					900	2355	790	2500	725	670	115	550	245	1640	1-1/2"G	1/2"G	1-1/2"G
UVL S3 205/1000V					1055	2355	790	2500	725	680	110	835	160	2120	2"G	1/2"G	2"G
UVL S3 305/1000V					1125	2355	790	2500	725	680	180	835	160	2120	2"G	1/2"G	2"G