

DIMENSIONI D'INGOMBRO

Overall dimensions

POMPE CENTRIFUGHE MULTISTADIO

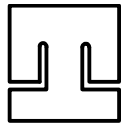
Multistage centrifugal pumps

SERIE

TMA 31 & TMA 32

pag.2/2

pompetravaini



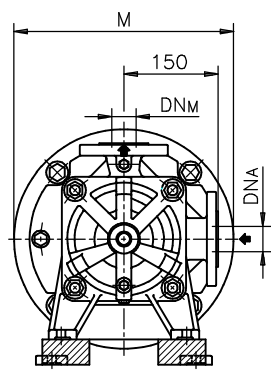
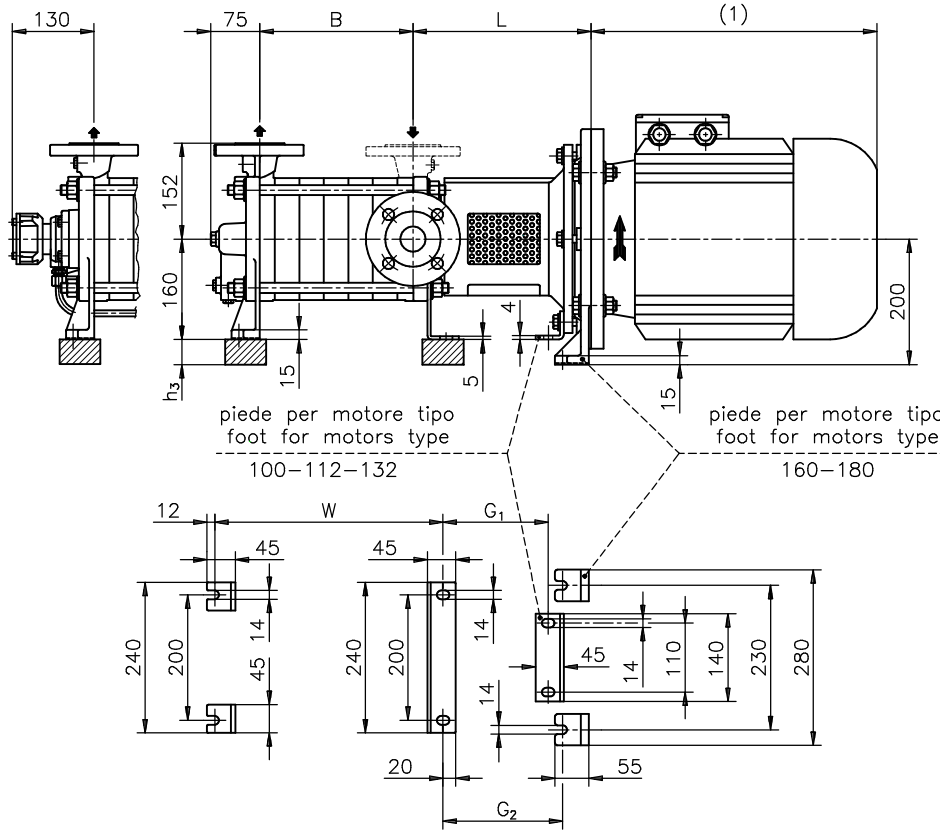
CASTANO PRIMO (MILANO)

Versione **MONOBLOCCO**

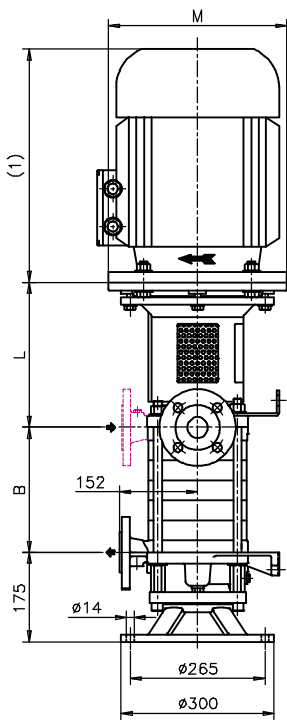
CLOSE COUPLED construction

Esecuzione **C**
construction **C**

Esecuzione **R***
construction **R***



Versione **VERTICALE**
Esecuzione **R/MV**
VERTICAL construction
construction **R/MV**



MOTORI ELETTRICI
Electric Motors

Grandezza Frame size	Giri/min. RPM 2900 Kw	M
100L	3	250
112M	4	250
132M	5,5 - 7,5	300
160M	11 - 15	350
160L	18,5	350
180M	22	350

POMPA TIPO Pump model	Versione MONOBLOCCO CLOSE - COUPLED construction													
			motore motor 100-112			motore motor 132			motore motor 160-180					
	DN _A	DN _M	B	W	L	G ₁	Peso weight	L	G ₁	Peso weight	L	G ₂	h ₃	Peso weight
TMA 31-3 & 32-3	40	32	125	205	229	142	45	250	165	48				
TMA 31-4 & 32-4	40	32	164	244	229	142	50	250	165	53				
TMA 31-5 & 32-5	40	32	203	283	229	142	55	250	165	58				
TMA 31-6 & 32-6	40	32	242	322	229	142	60	250	165	63	279	187	40	75
TMA 31-7 & 32-7	40	32	281	361				250	165	68	279	187	40	80
TMA 31-8 & 32-8	40	32	320	400				250	165	73	279	187	40	85
TMA 31-9 & 32-9	40	32	359	439				250	165	78	279	187	40	90
TMA 31-10 & 32-10	40	32	398	478				250	165	83	279	187	40	95
TMA 31-11 & 32-11	40	32	437	517							279	187	40	100
TMA 31-12 & 32-12	40	32	476	556							279	187	40	105
TMA 31-13 & 32-13	40	32	515	595							279	187	40	110
TMA 31-14 & 32-14	40	32	554	634							279	187	40	115
TMA 31-15 & 32-15	40	32	593	673							279	187	40	120

(1) Dimensioni in funzione della marca del motore installato.
(1) Not certified dimensions according to installed motor manufacture.

(h₃) Spessori per allineamento motore - pompa, esclusi dalla fornitura.
(h₃) Spacers for motor - pump alignment are not supplied by pompetravaini.

RIF. - Ref.: Z.A./C.T.	SOSTITUISCE - Replaces: 4410÷4413.2L0.201.01.B
DATA - Date: MAGGIO 98 - May 98	N°.: 4410÷4413.2L0.201.02.B



Москва, ул. Юности, д.5, стр. 4
Тел. (495) 988-78-29 Мегатехника.Москва
Единый телефон сервисной службы 8(800)100-77-83

Санкт-Петербург, ул. Софийская, д.17, оф. 311
Тел. (812) 331-70-11 Мегатехника.РФ
Единый телефон сервисной службы 8(800)100-77-83

Z:\DOC\DIMENSIONI\TMA\4400100B