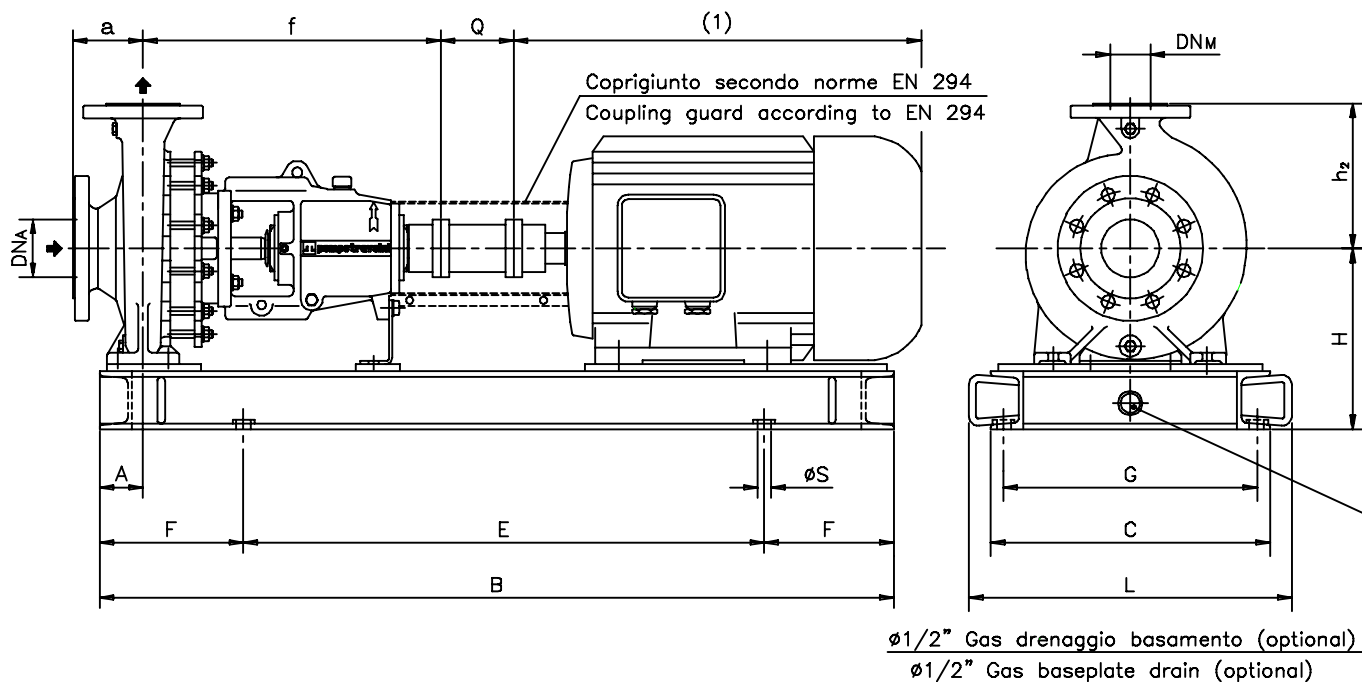


Versione **ACCOPIATA (BASE - GIUNTO SPAZIATORE)**
COUPLED construction (BASEPLATE - SPACER COUPLING)



Pompa tipo Pump type	DIMENSIONI							MOTORE ELETTRICO <i>Electric Motor</i>																		
	Dimensions							80M			90S/90L			100L			112M			132S/132M			160M/160L			
	DN _A	DN _M	a	f	h ₂	Q	A	N°	H	Peso Weight	N°	H	Peso Weight	N°	H	Peso Weight	N°	H	Peso Weight	N°	H	Peso Weight	N°	H	Peso Weight	
32-125	50	32	80	405	140	100	60	C01	202	71	C03	202	82	C03	202	82,5	C03	202	81	C03	222	86				
32-160	50	32	80	411	160	100	60	C01	222	77	C03	222	91	C03	222	92	C03	222	89,5	C03	222	89				
32-200	50	32	80	411	180	100	60	C01	250	79,5	C03	250	92	C03	250	93	C03	250	94	C03	250	97	C05	250	99	
40-125	65	40	80	405	140	100	60	C01	202	73	C03	202	84	C03	202	84,5	C03	202	83	C03	222	88	C05	250	94	
40-160	65	40	80	411	160	100	60	C01	222	79	C03	222	91	C03	222	92	C03	222	91,5	C03	222	93	C05	250	102	
40-200	65	40	100	411	180	100	60	C01	250	82	C03	250	95	C03	250	96	C03	250	96	C03	250	99	C05	250	101	
40-250	65	40	100	533	225	100	75				C03	270	134	C03	270	134	C03	270	135	C05	270	141	C11	310	178	
50-125	80	50	100	405	160	100	60	C01	222	77	C03	222	89	C03	222	90	C03	222	89,5	C03	222	91	C05	250	100	
50-160	80	50	100	411	180	100	60	C01	250	81	C03	250	94	C03	250	95	C03	250	95	C03	250	98	C05	250	100	
50-200	80	50	100	411	200	100	60	C01	250	83	C03	250	96	C03	250	97	C03	250	97	C03	250	100	C05	250	102	
50-250	80	50	125	533	225	100	75							C03	270	138	C03	270	140	C05	270	146	C11	310	185	
65-160	100	65	100	526	200	100	75				C03	250	124	C03	250	125	C03	250	125	C05	250	132	C11	290	163	
65-200	100	65	100	526	225	100	75				C03	270	139	C03	270	140	C03	270	140	C05	270	146	C11	310	185	
65-250	100	65	125	539	250	100	90				C05	290	146	C05	290	146	C05	290	146	C05	290	147	C11	330	187	
80-160	125	80	125	526	225	100	75				C03	270	133	C03	270	130	C03	270	130	C05	270	133	C11	310	177	
80-200	125	80	125	526	250	100	75				C03	270	145	C03	270	144	C03	270	144	C05	270	150	C11	310	191	
80-250	125	80	125	539	280	100	90													C05	315	169	C11	355	207	
100-200	125	100	125	526	280	100	90				C05	290	180	C05	290	179	C05	290	179	C05	290	179	C11	330	217	

DISEGNO SCHEMATICO. DIMENSIONI IN MM CON TOLLERANZE SECONDO EN 735-1995. PESI INDICATI IN KG, RIFERITI A POMPE IN ESECUZIONE "GS" GHISA SFEROIDALE ESCLUSO MOTORE, NON IMPEGNATIVI.

Schematic drawing. Dimensions in mm with tolerances to EN 735-1995 standards. Weights in Kgs, referred to pump in ductile iron "GS" construction without motor, not binding.

(1) DIMENSIONI IN FUNZIONE DELLA MARCA DEL MOTORE ELETTRICO INSTALLATO / Not binding dimensions according to installed motor supplier

RIF. - Ref.: E.Z./C.T.

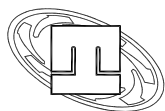
SOSTITUISCE - Replaces: 3900.1L5.2001.04.01

DATA - Date: NOVEMBRE 2011 - November 2011

N°.: 3900.1L5.2001.05.01

Z:\DOC\Dimensioni\Tct\TCT_SPAZ_GR_1-2.doc

DIMENSIONI D'INGOMBRO / Overall dimensions.
POMPE CENTRIFUGHE MONOSTADIO
Monostage centrifugal pumps
SERIE / Series
TCT gr. 1-2 pag.2/2



pompetravaini S.p.A.
CASTANO PRIMO (MILANO)

Versione **ACCOPIATA (BASE - GIUNTO SPAZIATORE)**
COUPLED construction (BASEPLATE - SPACER COUPLING)

BASAMENTI
Base plates

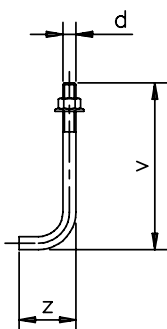
N°	B	C	E	F	L	G	øS	N°fori holes
C01	800	320	500	150	380	280	18	4
C03	1000	385	600	200	445	345	18	4
C05	1200	420	800	200	480	380	18	4
C11	1350	500	950	200	570	452	18	4
C13	1650	640	1050	300	710	592	18	4

DIMENSIONI FLANGE
Flanges dimensions

DN _A -DN _M	D	K	P	N°fori holes
25	115	85	14	4
32	140	100	18	4
40	150	110	18	4
50	165	125	18	4
65	185	145	18	4
80	200	160	18	8
100	220	180	18	8
125	250	210	18	8

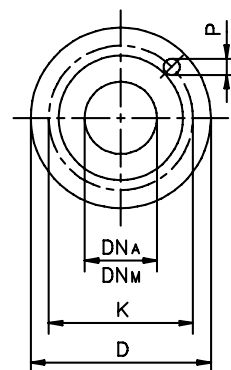
FLANGE:
 Dimensioni secondo
 UNI 2223-2229 PN16

FLANGES:
 Dimensions to
 UNI 2223-2229 NP16
 standards



BULLONI DI FONDAZIONE
 (OPTIONAL)
Foundation bolts

d	v	z
M14	280	50
M16	350	60
M20	400	80



Pompa tipo Pump type	MOTORE ELETTRICO <i>Electric Motor</i>														
	180M/180L			200L			225S/225M			250M			280S/280M		
	N°	H	Peso Weight	N°	H	Peso Weight	N°	H	Peso Weight	N°	H	Peso Weight	N°	H	Peso Weight
32-125															
32-160															
32-200															
40-125															
40-160															
40-200	C05	270	101												
40-250	C11	310	175												
50-125															
50-160	C05	270	100												
50-200	C05	270	102	C11	330	141									
50-250	C11	310	182	C13	333	175	C13	358	177	C13	383	178	C13	413	182
65-160	C11	310	170	C13	333	232									
65-200	C11	310	182	C13	333	207	C13	358	207	C13	383	207	C13	413	208
65-250	C11	330	184	C13	333	214	C13	358	217	C13	383	218	C13	413	221
80-160	C11	310	174	C13	333	207	C13	358	209	C13	383	207			
80-200	C11	310	190	C13	333	222	C13	358	224	C13	383	222	C13	413	224
80-250	C11	355	207	C13	358	239	C13	358	237	C13	383	239	C13	413	241
100-200	C11	330	217	C13	333	249	C13	358	247	C13	383	249	C13	413	251

MOTORI ELETTRICI
Electric Motors

Grandezza Frame size	Giri/min RPM	Giri/min RPM
	2900	1450
	Kw	Kw
IEC		
80M	0,75	0,55
	1,1	0,75
90S	1,5	1,1
90L	2,2	1,5
100L	3	2,2
		3
112M	4	4
132S	5,5-7,5	5,5
132M		7,5
160M	11-15	11
160L	18,5	15
180M	22	18,5
180L		22
200L	30-37	30
225S		37
225M	45	45
250M	55	55
280S	75	75
280M	90	90

DISEGNO SCHEMATICO. DIMENSIONI IN MM CON TOLLERANZE SECONDO EN 735-1995. PESI INDICATI IN KG, RIFERITI A POMPE IN ESECUZIONE "GS" GHISA SFEROIDALE ESCLUSO MOTORE, NON IMPEGNATIVI.

Schematic drawing. Dimensions in mm with tolerances to EN 735-1995 standards. Weights in Kgs, referred to pump in ductile iron "GS" construction without motor, not binding.

(1) DIMENSIONI IN FUNZIONE DELLA MARCA DEL MOTORE ELETTRICO INSTALLATO / Not binding dimensions according to installed motor supplier

RIF. - Ref.: E.Z./C.T.

SOSTITUISCE - Replaces: 3900.1L5.2001.04.02

DATA - Date: NOVEMBRE 2011 - November 2011

N°.: 3900.1L5.2001.05.02

Z:\DOC\Dimensioni\Tct\TCT_SPAZZ_GR_1-2.doc



Moskva, ul. Юности, д.5, стр. 4
 Тел. (495) 988-78-29 Мегатехника.Москва
 Единый телефон сервисной службы 8(800)100-77-83

Санкт-Петербург, ул. Софийская, д.17, оф. 311
 Тел. (812) 331-70-11 Мегатехника.РФ
 Единый телефон сервисной службы 8(800)100-77-83