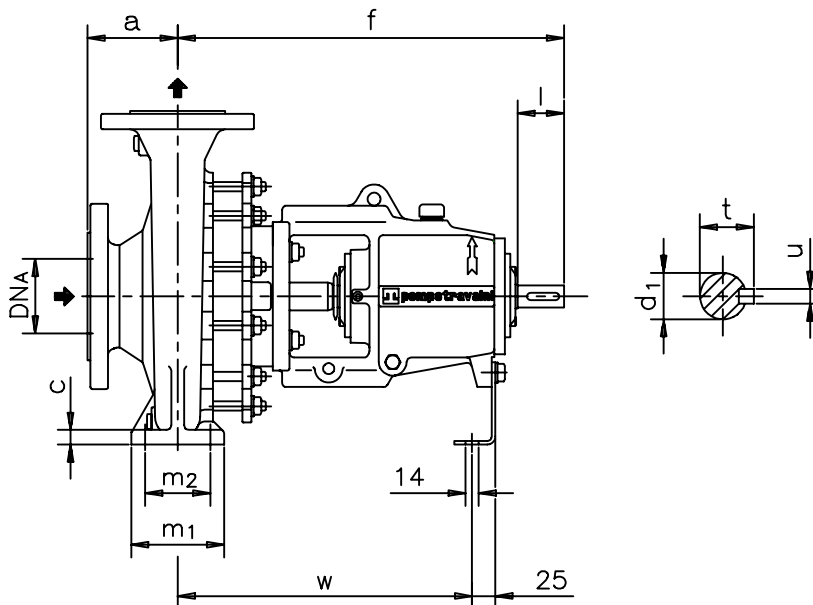
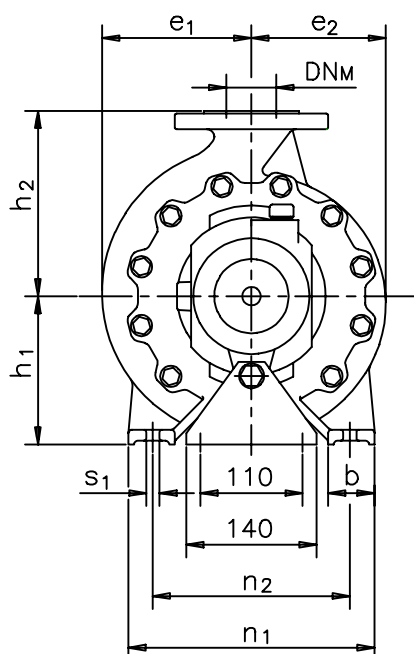


Versione ad **ASSE NUDO**

BARESHAFT construction



| Pompa tipo Pump type | Versione ad ASSE NUDO | | | | | | | | | | | | | | | | | | | | Peso Weight |
|-------------------------|-------------------------------|-----------------|-----|-----|----------------|----------------|----|----|----------------|----------------|----------------|----------------|----------------|-----|----------------|----|----|----|----------------|----------------|----------------|
| | BARESHAFT construction | | | | | | | | | | | | | | | | | | | | |
| | DN _A | DN _M | a | f | h ₁ | h ₂ | b | c | m ₁ | m ₂ | n ₁ | n ₂ | s ₁ | w | d ₁ | l | t | u | e ₁ | e ₂ | |
| 32-125 | 50 | 32 | 80 | 405 | 112 | 140 | 50 | 15 | 100 | 70 | 190 | 140 | 14 | 305 | 24 | 50 | 27 | 8 | 105 | 91 | 36 |
| 32-160 | 50 | 32 | 80 | 411 | 132 | 160 | 50 | 16 | 100 | 70 | 240 | 190 | 14 | 311 | 24 | 50 | 27 | 8 | 125 | 110 | 42 |
| 32-200 | 50 | 32 | 80 | 411 | 160 | 180 | 50 | 16 | 100 | 70 | 240 | 190 | 14 | 311 | 24 | 50 | 27 | 8 | 140 | 130 | 46 |
| 40-125 | 65 | 40 | 80 | 405 | 112 | 140 | 50 | 15 | 100 | 70 | 210 | 160 | 14 | 305 | 24 | 50 | 27 | 8 | 115 | 100 | 38 |
| 40-160 | 65 | 40 | 80 | 411 | 132 | 160 | 50 | 16 | 100 | 70 | 240 | 190 | 14 | 311 | 24 | 50 | 27 | 8 | 130 | 115 | 42 |
| 40-200 | 65 | 40 | 100 | 411 | 160 | 180 | 50 | 16 | 100 | 70 | 265 | 212 | 14 | 311 | 24 | 50 | 27 | 8 | 146 | 135 | 48 |
| 40-250 | 65 | 40 | 100 | 533 | 180 | 225 | 65 | 18 | 125 | 95 | 320 | 250 | 14 | 403 | 32 | 80 | 35 | 10 | 176 | 163 | 85 |
| 50-125 | 80 | 50 | 100 | 405 | 132 | 160 | 50 | 16 | 100 | 70 | 240 | 190 | 14 | 305 | 24 | 50 | 27 | 8 | 130 | 110 | 42 |
| 50-160 | 80 | 50 | 100 | 411 | 160 | 180 | 50 | 16 | 100 | 70 | 265 | 212 | 14 | 311 | 24 | 50 | 27 | 8 | 147 | 125 | 47 |
| 50-200 | 80 | 50 | 100 | 411 | 160 | 200 | 50 | 16 | 100 | 70 | 265 | 212 | 14 | 311 | 24 | 50 | 27 | 8 | 161 | 146 | 49 |
| 50-250 | 80 | 50 | 125 | 533 | 180 | 225 | 65 | 18 | 125 | 95 | 320 | 250 | 14 | 403 | 32 | 80 | 35 | 10 | 183 | 169 | 90 |
| 65-160 | 100 | 65 | 100 | 526 | 160 | 200 | 65 | 16 | 125 | 95 | 280 | 212 | 14 | 396 | 32 | 80 | 35 | 10 | 160 | 130 | 75 |
| 65-200 | 100 | 65 | 100 | 526 | 180 | 225 | 65 | 18 | 125 | 95 | 320 | 250 | 14 | 396 | 32 | 80 | 35 | 10 | 174 | 152 | 82 |
| 65-250 | 100 | 65 | 125 | 539 | 200 | 250 | 80 | 20 | 160 | 120 | 360 | 280 | 18 | 409 | 32 | 80 | 35 | 10 | 195 | 175 | 90 |
| 80-160 | 125 | 80 | 125 | 526 | 180 | 225 | 65 | 16 | 125 | 95 | 320 | 250 | 14 | 396 | 32 | 80 | 35 | 10 | 186 | 142 | 80 |
| 80-200 | 125 | 80 | 125 | 526 | 180 | 250 | 65 | 18 | 125 | 95 | 345 | 280 | 14 | 396 | 32 | 80 | 35 | 10 | 188 | 158 | 95 |
| 80-250 | 125 | 80 | 125 | 539 | 225 | 280 | 80 | 20 | 160 | 120 | 400 | 315 | 18 | 409 | 32 | 80 | 35 | 10 | 225 | 185 | 112 |
| 100-200 | 125 | 100 | 125 | 526 | 200 | 280 | 80 | 20 | 160 | 120 | 360 | 280 | 18 | 396 | 32 | 80 | 35 | 10 | 211 | 170 | 112 |

Disegno schematico. Dimensioni in mm con tolleranze secondo EN 735-1995. Pesi indicativi in Kg, riferiti a pompe in esecuzione "GS" ghisa sferoidale escluso motore, non impegnativi.
 Schematic drawing. Dimensions in mm with tolerances to EN 735-1995 standards. Weights in Kgs, referred to pump in ductile iron "GS" construction without motor, not binding.

RIF. - Ref.: F.P./C.T.

SOSTITUISCE - Replaces: 3900.100.201.01.A

DATA - Date: SETTEMBRE 2004 - September 2004

N°.: 3900.100.201.02.A