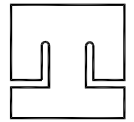


DIMENSIONE D'INGOMBRO / Overall dimensions
 POMPE CENTRIFUGHE AUTOADESCANTI
 Self-priming centrifugal pumps
 SERIE / Series
 TBH 650 / 2

pompetravaini

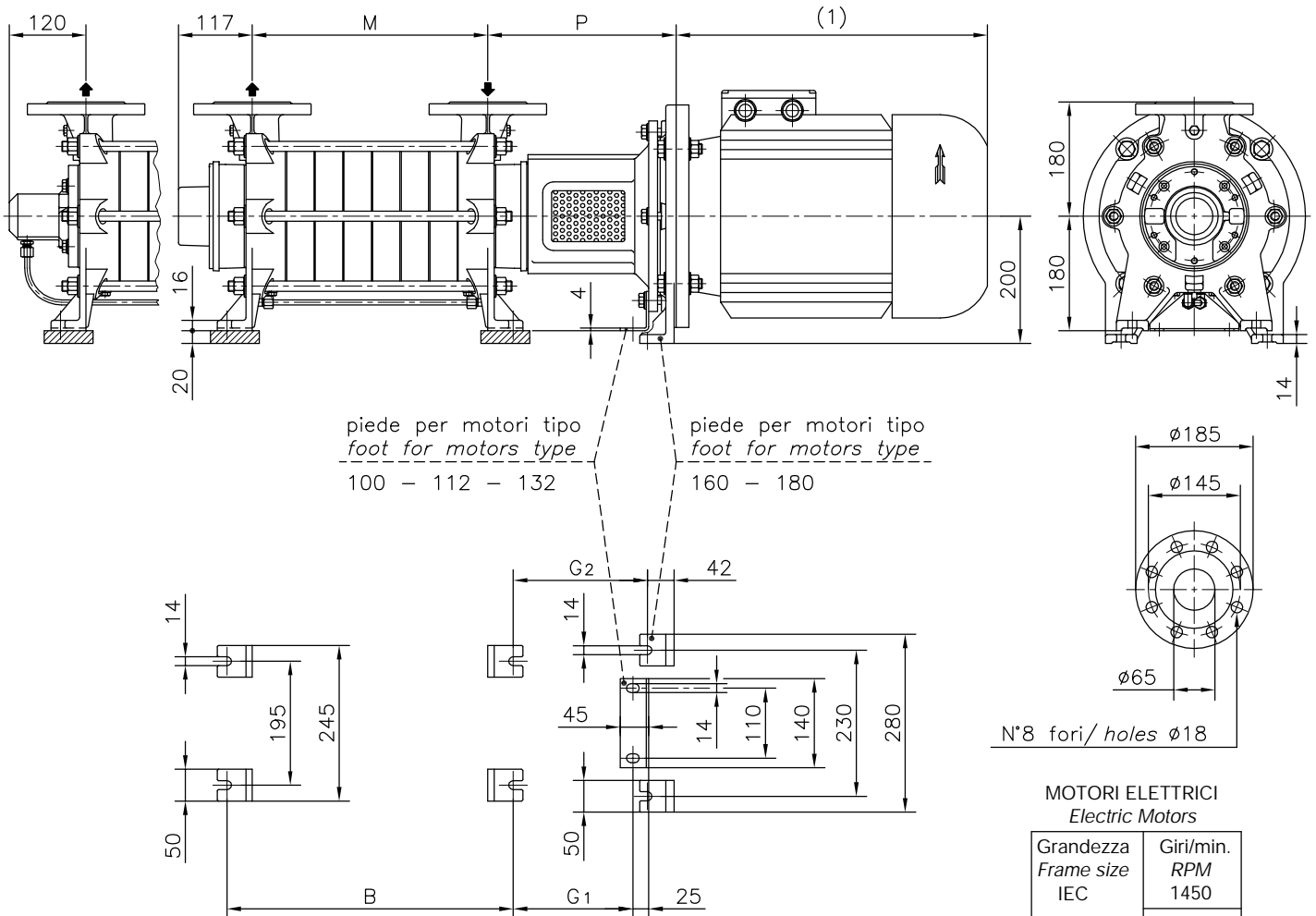


CASTANO PRIMO (MILANO)

Versione MONOBLOCCO/M CLOSE - COUPLED/M construction

Esecuzione /R
 Construction /R

Esecuzione /C Construction /C



FLANGE: Dimensioni secondo UNI 2223 - 2229 PN40

FLANGES: Dimensions to UNI 2223-2229 NP40 standards

Disegno schematico. Dimensioni in mm con tolleranze secondo EN 735 - 1995.

Pesi indicativi in Kg, riferiti a pompe in ghisa escluso motore, non impegnativi.

Schematic drawing. Dimensions in mm with tolerances to EN 735 - 1995 standards.

Weights in Kgs, referred to pumps in cast iron without motor, not certified.

(1) Dimensioni in funzione della marca del motore installato.

(1) Not certified dimensions according to installed motor manufacture.

MOTORI ELETTRICI
 Electric Motors

Grandezza Frame size IEC	Giri/min. RPM
	Kw
100L	2,2
	3
112M	4
132S	5,5
132M	7,5
160M	11
160L	15
180M	18,5
180L	22

POMPA TIPO Pump type	Versione MONOBLOCCO						CLOSE-COUPLED construction				
			motore motor 100 - 112			motore motor 132			motore motor 160 - 180		
	M	B	P	G ₁	Peso Weight	P	G ₁	Peso Weight	P	G ₂	Peso Weight
TBH 651	190	270	245.5	165	69	267	189	71	296	211	83
TBH 652	280	360	245.5	165	84	267	189	86	296	211	98
TBH 653	370	450	245.5	165	99	267	189	101	296	211	113
TBH 654	460	540	245.5	165	114	267	189	116	296	211	128
TBH 655	550	630	245.5	165	129	267	189	131	296	211	143
TBH 656	640	720	245.5	165	144	267	189	146	296	211	158
TBH 657	730	810	245.5	165	159	267	189	161	296	211	173
TBH 658	820	900	245.5	165	174	267	189	176	296	211	188