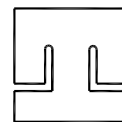


DIMENSIONE D'INGOMBRO / Overall dimensions
 POMPE CENTRIFUGHE AUTOADESCANTI
 Self-priming centrifugal pumps
 SERIE / Series
 TBH 290 - 300 - 310 / 1

pompetravaini

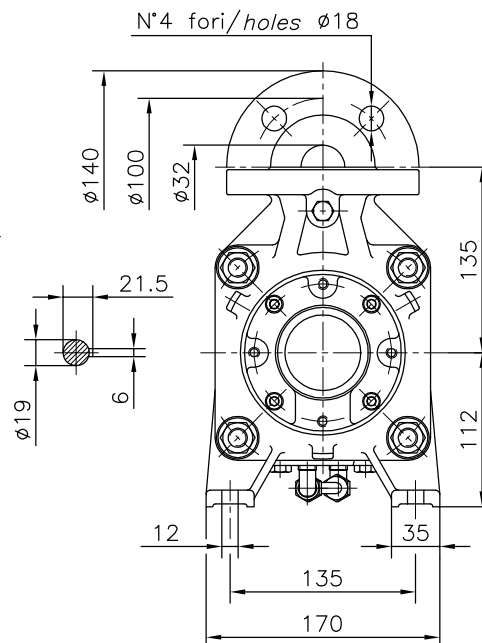
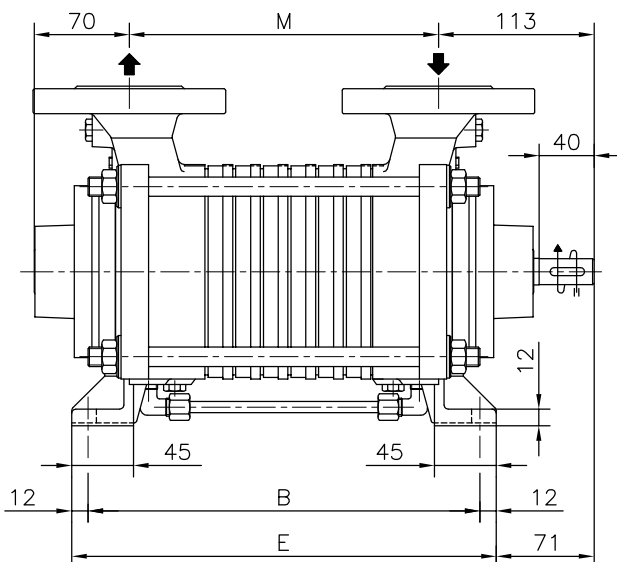
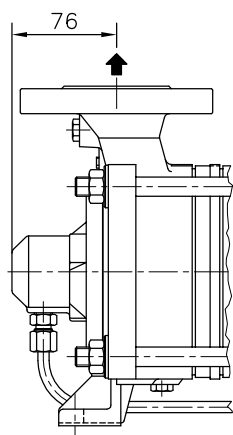
CASTANO PRIMO (MILANO)



Versione ad ASSE NUDO **BARESHAFT construction**

Esecuzione /R
 Construction /R

Esecuzione /C Construction /C



POMPA TIPO <i>Pump type</i>	Versione ad ASSE NUDO			BARESHAFT construction		
	DIMENSIONI <i>Dimensions</i>			/R - /C	/R/T	/C/T
	M	B	E	Peso <i>Weight</i>	Peso <i>Weight</i>	Peso <i>Weight</i>
TBH 291 - 301 - 311	144	204	228	22,5	27,5	32,5
TBH 292 - 302 - 312	184	244	268	26	31	36
TBH 293 - 303 - 313	224	284	308	29,5	34,5	39,5
TBH 294 - 304 - 314	264	324	348	33	38	43
TBH 295 - 305 - 315	304	364	388	36,5	41,5	46,5
TBH 296 - 306 - 316	344	404	428	40	45	50
TBH 297 - 307 - 317	384	444	468	43,5	48,5	53,5
TBH 298 - 308 - 318	424	484	508	47	52	57

FLANGE:
 Dimensioni secondo
 UNI 2223-2229 PN40

FLANGES:
 Dimensions to
 UNI 2223-2229 NP40 standards

Disegno schematico. Dimensioni in mm con tolleranze secondo EN 735-1995. Pesi indicativi in Kg, riferiti a pompe in ghisa escluso motore, non impegnativi.

Schematic drawing. Dimensions in mm with tolerances to EN 735-1995 standards. Weights in Kgs, referred to pumps in cast iron without motor, not certified.

Esecuzione /R/T
 Construction /R/T

Esecuzione /C/T Construction /C/T

