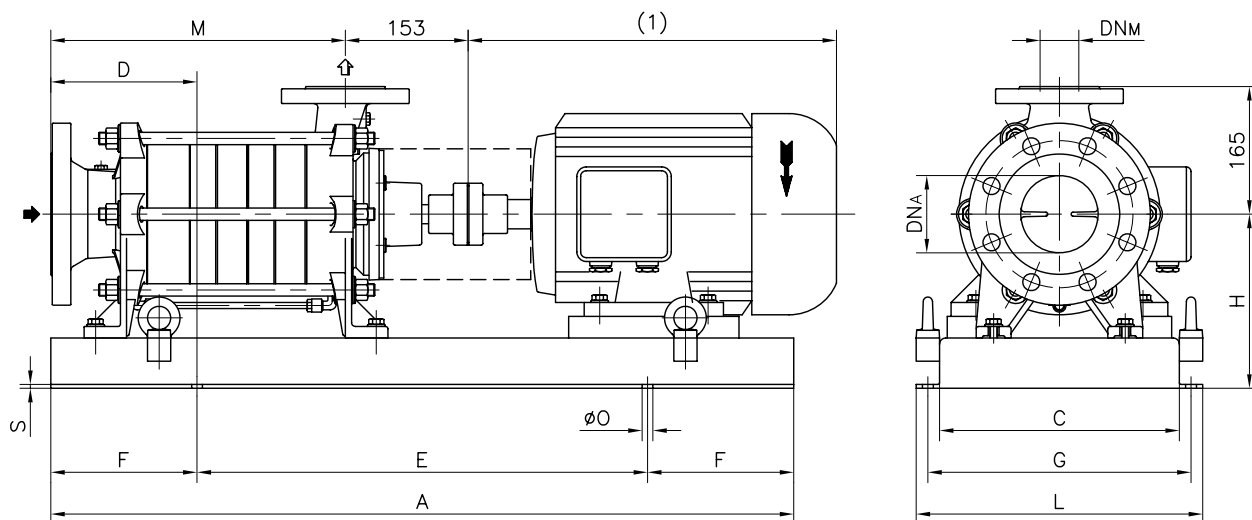


Versione **ACCOPPIATA (BASE-GIUNTO)**
COUPLED construction (BASEPLATE-COUPLING)



FLANGE: Dimensioni secondo UNI 2223-2229 PN40

FLANGES: Dimensions to UNI 2223-2229 NP40 standards

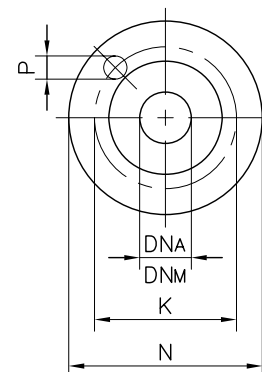
POMPA TIPO Pump type	DIMENSIONI Dimensions			MOTORE ELETTRICO Electric motor																				
	DNA	DNM	M	100L			112M			132S / 132M			160M / 160L			180M / 180L								
				N°	D	H	Peso Weight	N°	D	H	Peso Weight	N°	D	H	Peso Weight	N°	D	H	Peso Weight	N°	D	H	Peso Weight	
TBA 501	100	50	305	901	180	220	87	901	180	225	85	900	140	225	102	903	115	250	127					
TBA 502	100	50	380	900	223	225	114	900	140	225	112	900	180	225	112	903	155	250	137	907	110	280	120	
TBA 503	100	50	455					900	185	225	122	900	215	225	122	903	190	250	147	907	180	280	130	
TBA 504	100	50	530									903	170	250	160	903	228	250	157	041	185	310	160	
TBA 505	100	50	605									903	205	250	170	906	175	260	185	041	225	310	170	
TBA 506	100	50	680									906	155	260	198	906	215	260	195	034	175	310	197	
TBA 507	100	50	755													906	250	260	200	034	255	310	207	
TBA 508	100	50	830													034	333	290	215	034	333	310	217	

POMPA TIPO Pump type	MOTORE ELETTRICO Electric motor							
	200L				225S / 225M			
	N°	D	H	Peso Weight	N°	D	H	Peso Weight
TBA 501								
TBA 502								
TBA 503								
TBA 504	041	200	330	165				
TBA 505	041	220	330	175	034	130	355	195
TBA 506	034	185	330	200	034	215	355	205
TBA 507	034	265	330	210	034	295	355	215
TBA 508	034	333	330	220	034	333	355	225

DIMENSIONI FLANGE Flanges dimensions				
DNA - DNM	N	K	P	N° fori holes
50	165	125	18	4
100	235	190	22	8

**MOTORI ELETTRICI
Electric Motors**

Grandezza Frame size IEC	Giri/min. RPM 1450
	Kw
100L	2,2 3
112M	4
132S	5,5
132M	7,5
160M	11
160L	15
180M	18,5
180L	22
200L	30
225S	37
225M	45



BASAMENTI Base plates									
N°	A	C	E	F	L	G	S	ØO	N° fori holes
900	960	310	600	180	370	340	5	14	4
901	770	290	420	175	350	320	5	14	4
903	1170	350	770	200	410	380	6	14	4
906	1400	350	950	225	410	380	6	14	4
907	1200	420	900	150	510	470	6	18	4
034	1700	450	1100	300	590	540	7	18	4
041	1350	420	900	225	560	510	7	18	4

Disegno schematico. Dimensioni in mm con tolleranze secondo EN 735-1995. Pesì indicativi in Kg, riferiti a pompe in ghisa escluso motore, non impegnativi.
 Schematic drawing. Dimensions in mm with tolerances to EN 735-1995 standards. Weights in Kgs, referred to pumps in cast iron without motor, not certified.

(1) Dimensioni in funzione della marca del motore installato. (1) Not certified dimensions according to installed motor manufacture.