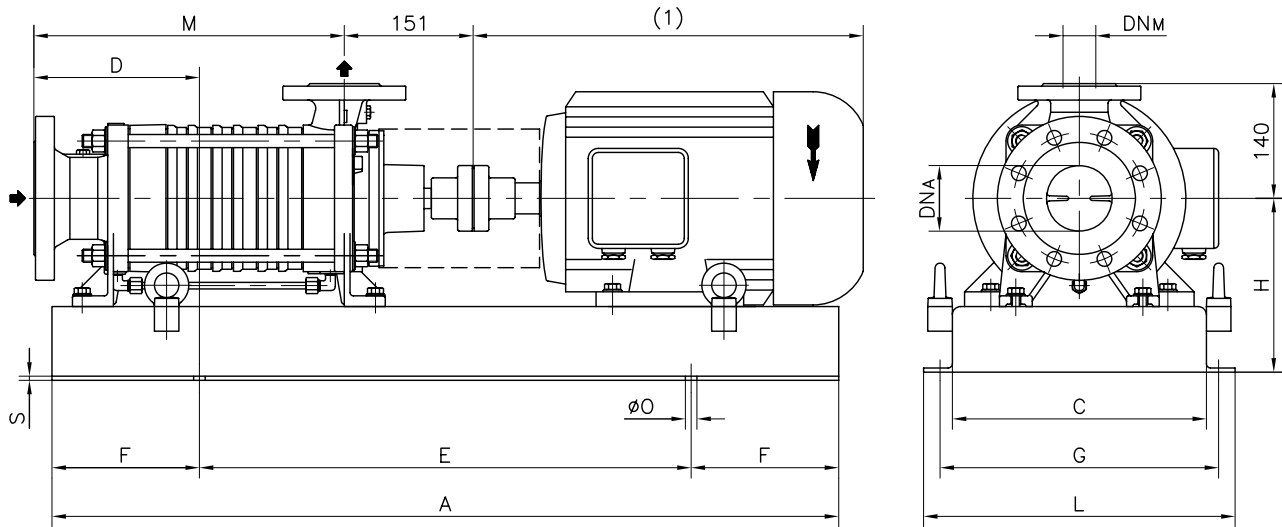


Versione **ACCOPPIATA (BASE-GIUNTO)**
COUPLED construction (BASEPLATE-COUPLING)



FLANGE: Dimensioni secondo UNI 2223-2229 PN40

FLANGES: Dimensions to UNI 2223-2229 NP40 standards

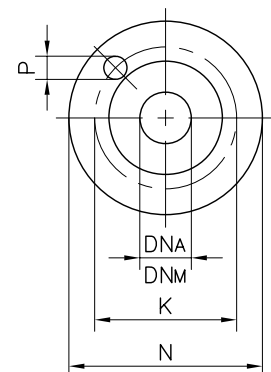
| POMPA TIPO Pump type | DIMENSIONI Dimensions | | | MOTORE ELETTRICO Electric motor | | | | | | | | | | | | | | | | | | | | |
|-------------------------|--------------------------|-----|-----|------------------------------------|-----|-----|-------------|------|-----|-----|-------------|------|-----|-----|-------------|-------------|-----|-----|-------------|-------------|-----|-----|-------------|--|
| | | | | 90S / 90L | | | | 100L | | | | 112M | | | | 132S / 132M | | | | 160M / 160L | | | | |
| | DNA | DNM | M | N° | D | H | Peso Weight | N° | D | H | Peso Weight | N° | D | H | Peso Weight | N° | D | H | Peso Weight | N° | D | H | Peso Weight | |
| TBA 401 | 80 | 40 | 268 | 901 | 205 | 192 | 60 | 901 | 220 | 192 | 77 | 901 | 220 | 192 | 78 | | | | | | | | | |
| TBA 402 | 80 | 40 | 323 | 901 | 220 | 192 | 65 | 900 | 150 | 197 | 92 | 900 | 150 | 197 | 89 | 900 | 180 | 197 | 80 | | | | | |
| TBA 403 | 80 | 40 | 378 | 900 | 150 | 197 | 97 | 900 | 180 | 197 | 97 | 900 | 180 | 197 | 94 | 900 | 200 | 197 | 85 | 903 | 180 | 250 | 120 | |
| TBA 404 | 80 | 40 | 433 | | | | | 900 | 205 | 197 | 102 | 900 | 205 | 197 | 99 | 900 | 225 | 197 | 90 | 903 | 210 | 250 | 125 | |
| TBA 405 | 80 | 40 | 488 | | | | | | | | | 900 | 205 | 197 | 104 | 903 | 175 | 222 | 110 | 903 | 210 | 250 | 130 | |
| TBA 406 | 80 | 40 | 543 | | | | | | | | | | | | | 903 | 175 | 222 | 115 | 903 | 245 | 250 | 135 | |
| TBA 407 | 80 | 40 | 598 | | | | | | | | | | | | | 903 | 195 | 222 | 120 | 906 | 170 | 260 | 155 | |
| TBA 408 | 80 | 40 | 653 | | | | | | | | | | | | | 906 | 175 | 232 | 135 | 906 | 240 | 260 | 160 | |

| POMPA TIPO Pump type | DIMENSIONI Dimensions | | | 180M / 180L | | | |
|-------------------------|--------------------------|-----|-----|-------------|-----|-----|-------------|
| | | | | N° | D | H | Peso Weight |
| | DNA | DNM | M | N° | D | H | Peso Weight |
| TBA 401 | 80 | 40 | 268 | | | | |
| TBA 402 | 80 | 40 | 323 | | | | |
| TBA 403 | 80 | 40 | 378 | | | | |
| TBA 404 | 80 | 40 | 433 | | | | |
| TBA 405 | 80 | 40 | 488 | | | | |
| TBA 406 | 80 | 40 | 543 | 041 | 185 | 310 | 168 |
| TBA 407 | 80 | 40 | 598 | 041 | 240 | 310 | 173 |
| TBA 408 | 80 | 40 | 653 | 041 | 262 | 310 | 178 |

| DIMENSIONI FLANGE Flanges dimensions | | | | |
|---|-----|-----|----|---------------|
| DNA - DNM | N | K | P | N° fori holes |
| 40 | 150 | 110 | 18 | 4 |
| 80 | 200 | 160 | 18 | 8 |

MOTORI ELETTRICI
Electric Motors

| Grandezza Frame size IEC | Giri/min. RPM |
|--------------------------------|------------------|
| | 1450 |
| | Kw |
| 90S | 1,1 |
| 90L | 1,5 |
| 100L | 2,2 3 |
| 112M | 4 |
| 132S | 5,5 |
| 132M | 7,5 |
| 160M | 11 |
| 160L | 15 |
| 180M | 18,5 |
| 180L | 22 |



| BASAMENTI Base plates | | | | | | | | | |
|--------------------------|------|-----|-----|-----|-----|-----|---|----|---------------|
| N° | A | C | E | F | L | G | S | øO | N° fori holes |
| 900 | 960 | 310 | 600 | 180 | 370 | 340 | 5 | 14 | 4 |
| 901 | 770 | 290 | 420 | 175 | 350 | 320 | 5 | 14 | 4 |
| 903 | 1170 | 350 | 770 | 200 | 410 | 380 | 6 | 14 | 4 |
| 906 | 1400 | 350 | 950 | 225 | 410 | 380 | 6 | 14 | 4 |
| 041 | 1350 | 420 | 900 | 225 | 560 | 510 | 7 | 18 | 4 |

Disegno schematico. Dimensioni in mm con tolleranze secondo EN 735-1995. Pesì indicativi in Kg, riferiti a pompe in ghisa escluso motore, non impegnativi.
 Schematic drawing. Dimensions in mm with tolerances to EN 735-1995 standards. Weights in Kgs, referred to pumps in cast iron without motor, not certified.
 (1) Dimensioni in funzione della marca del motore installato. (1) Not certified dimensions according to installed motor manufacture.