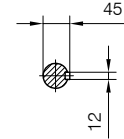
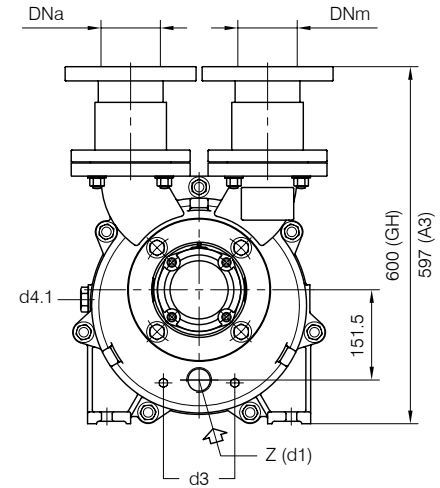
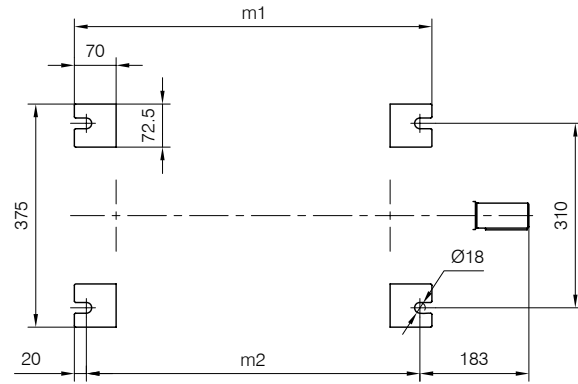
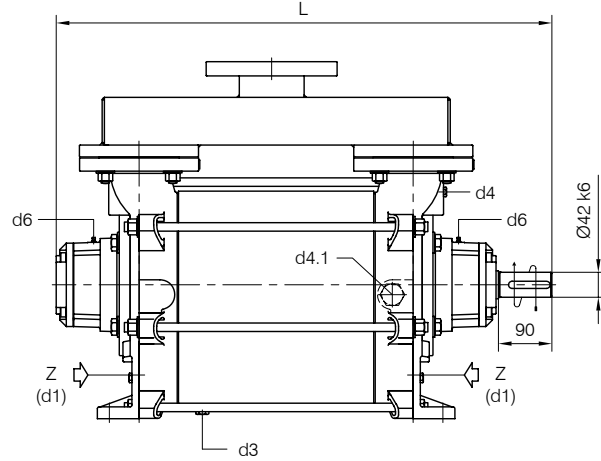




**BARESHAFT construction**



**Versione ad ASSE NUDO**



- d1 Connessione filettata G 1 1/4 - per ingresso alimentazione  
G 1 1/4 threaded connection - for liquid supply inlet
- d3 Attacco tappato G 1/4 - per scarico corpo pompa  
G 1/4 plugged connection - for pump casing drain
- d4 Attacco tappato G 1/4 - per manovuotometro  
G 1/4 plugged connection - for manovacuum gauge
- d4.1 Attacco tappato G 1 - connessione ausiliaria per valvola automatica di drenaggio  
G 1 plugged connection - auxiliary connection for automatic draining valve
- d6 Connessione ingrassatore - per lubrificazione cuscinetti tipo 6310  
Greaser connection - for ball bearings type 6310 lubrication

**Nota / Note :**

- Lt Quantità di acqua all'asse dell'albero in litri  
Water quantity at shaft axis in liters
- Mi Momento di Inerzia Max all'avviamento  
Max Moment of Inertia at start-up
- (GH) Pompa in ghisa e sue derivate  
Cast iron pumps and derivatives
- (A3) Pompa in acciaio inox e sue derivate  
Stainless steel pumps and derivatives

| POMPA TIPO<br>Pump type | Dimensioni costruttive Construction dimensions |     |     |     |     |     |     | Peso<br>Weight | Mi<br>kgm <sup>2</sup> | Lt |
|-------------------------|--|-----|-----|-----|-----|-----|-----|----------------|------------------------|----|
|                         | DNa  | DNm | L   | f1  | f2  | m1  | m2  |                |                        |    |
| TRSB 100-980            | 100  | 100 | 833 | 471 | 362 | 601 | 561 | 250            | 0.70                   | 22 |

Disegno schematico. Dimensioni in mm con tolleranze secondo EN 735-1995.  
 Pesì indicativi in Kg, riferiti a pompe in ghisa escluso motore, non impegnativi.  
 Schematic drawing. Dimensions in mm with tolerances according to EN 735-1995 standards.  
 Weights in Kgs, referred to pumps in cast iron without motor, not binding.

FLANGE: Dimensioni secondo UNI 2223 PN10  
 FLANGES: Dimensions according to UNI 2223 NP10

