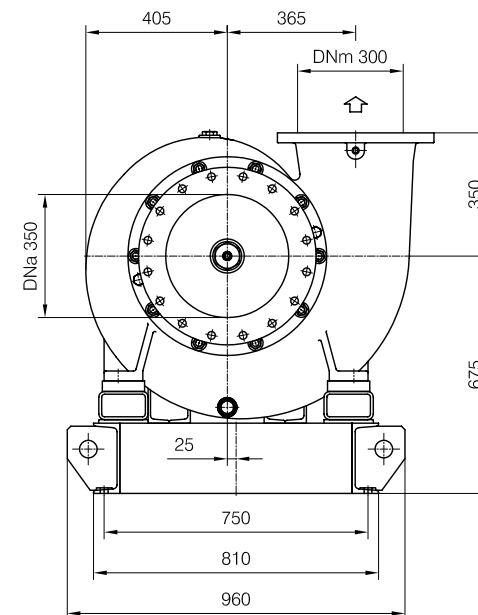
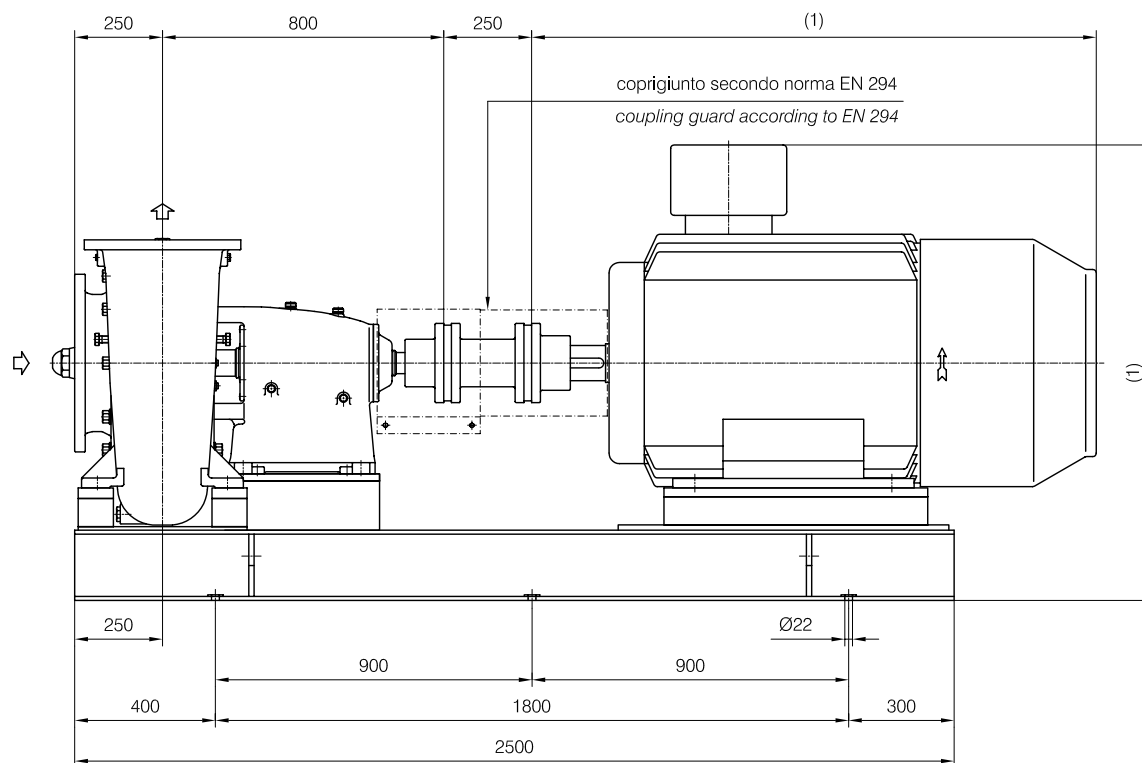




Peso / Weight 1220 Kg

Versione **ACCOPPIATA (BASE-GIUNTO SPAZIATORE)**
COUPLED construction (BASEPLATE-SPACER COUPLING)

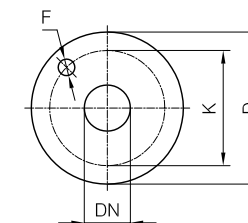


(1) Dimensioni in funzione della marca del motore installato.
 (1) Not certified dimensions according to installed motor manufacture.

FLANGE: Dimensioni secondo UNI 2223 PN10
 FLANGES: Dimensions to UNI 2223 NP10 standards

MOTORI ELETTRICI Electric Motors				
Grandezza Frame size IEC	Giri/min. RPM 980		Giri/min. RPM 740	
	kW	HP	kW	HP
	315 MA-MB	110	150	90
355 MA	160	215	132	175
355 MB	200	270	160	215
355 L	250	335	200	270

Dimensioni flange Flanges dimensions				
DNa-DNm	D	K	F	N° fori holes
300	445	400	25	12
350	505	460	22	16



Disegno schematico. Dimensioni in mm con tolleranze secondo EN 735-1995.
 Pesì indicativi in Kg, riferiti a pompe in ghisa escluso motore, non impegnativi.
 Schematic drawing. Dimensions in mm with tolerances to EN 735-1995 standards.
 Weights in Kgs, referred to pumps in cast iron without motor, not certified.