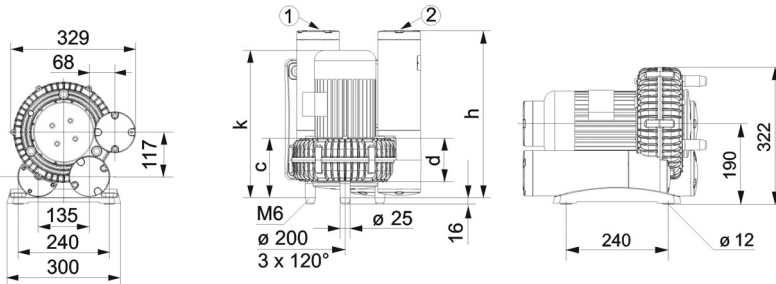
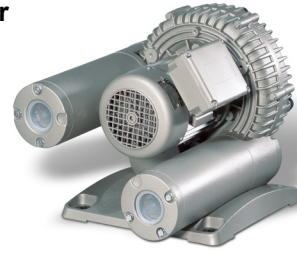
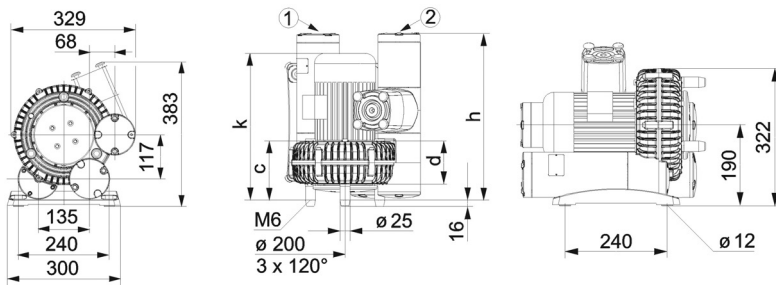


**Seitenkanal-Vakuumpumpen, zweistufig, luftgekühlt**  
**Side channel vacuum pumps, double stage, air-cooled**  
**Pompe à vide à canal latéral, double étagées, refroidies par air**  
**Aspiratori a canale laterale, dopiostadio, raffreddate ad aria**

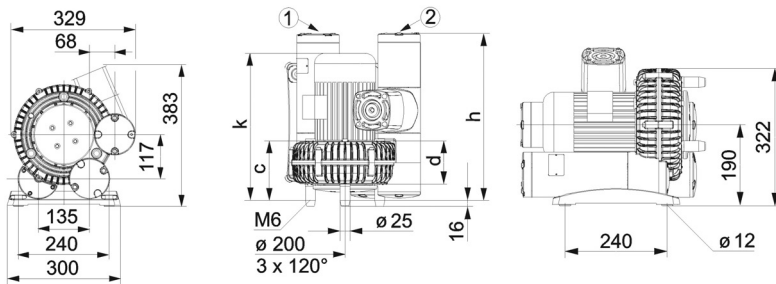
**SV 8.130/2-01**  
**SV 8.160/2-01**



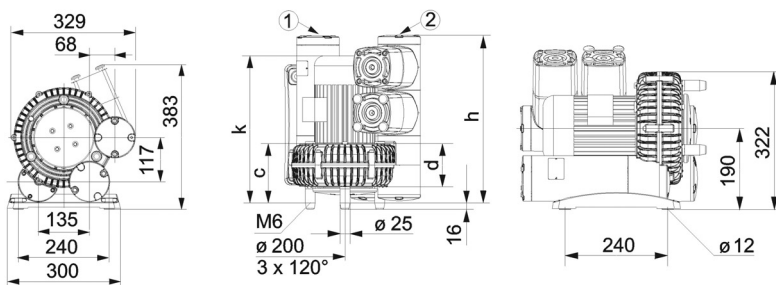
**1.**  
**ohne Zubehör / without accessories**  
**sans accessoires / senza accessori**



**2.**  
**Ansaugfilter / Suction filter**  
**Filtre aspiration / Filtro aspirazione**



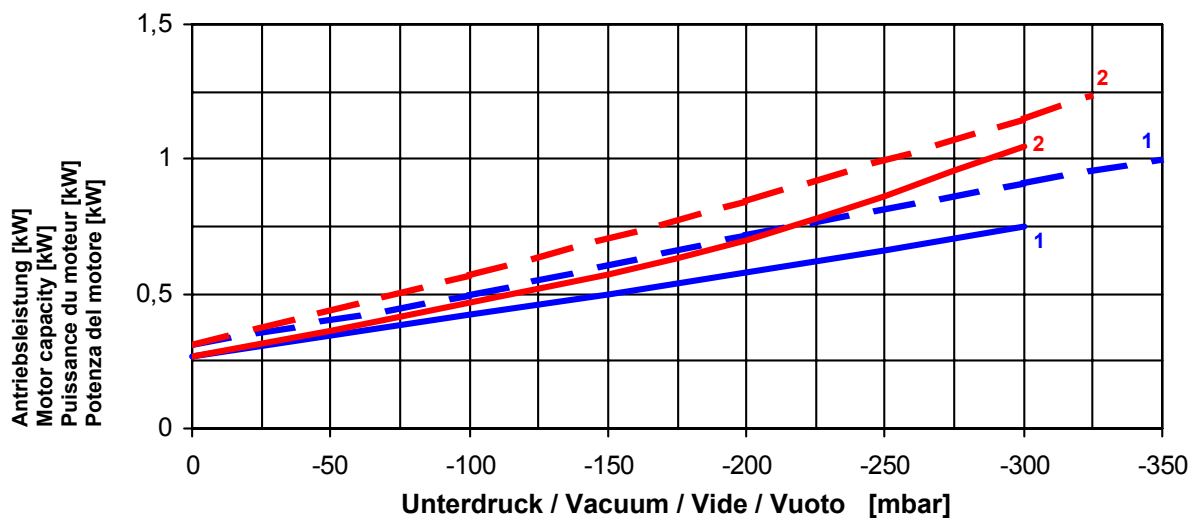
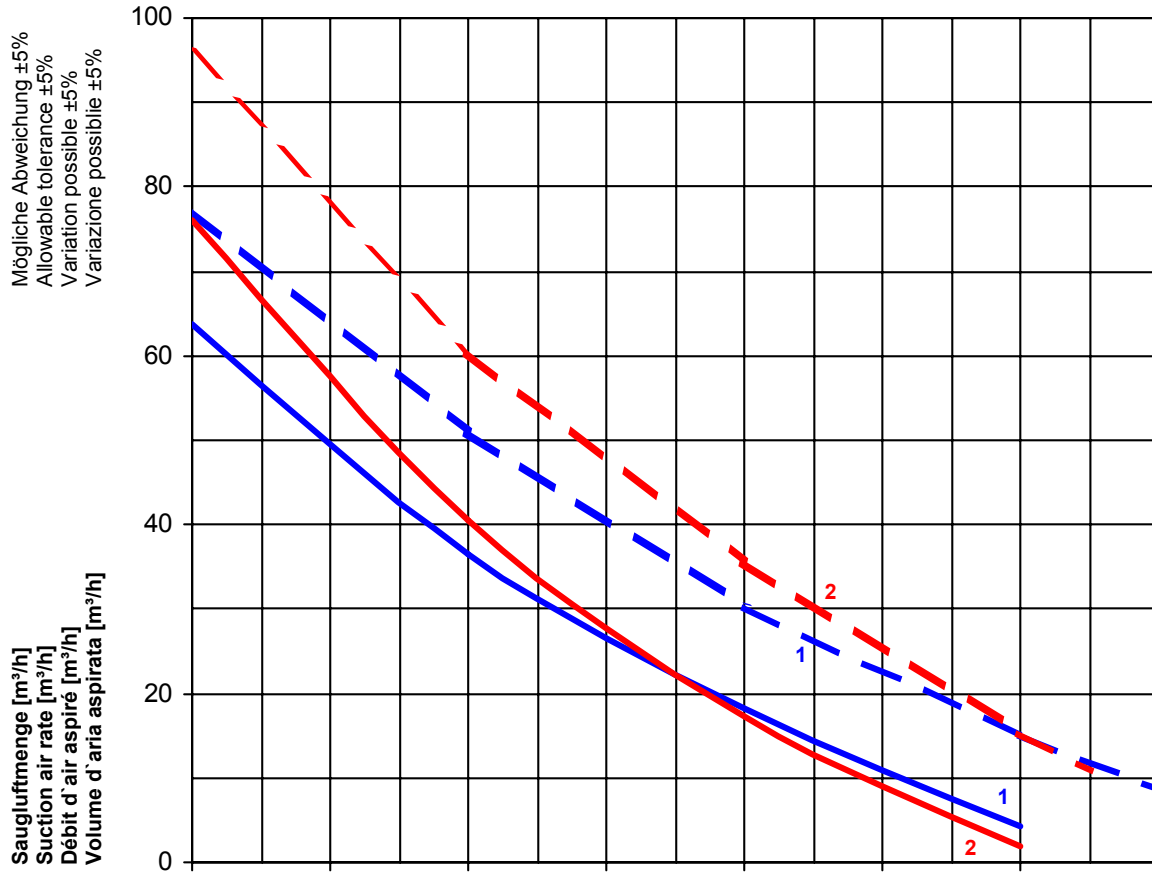
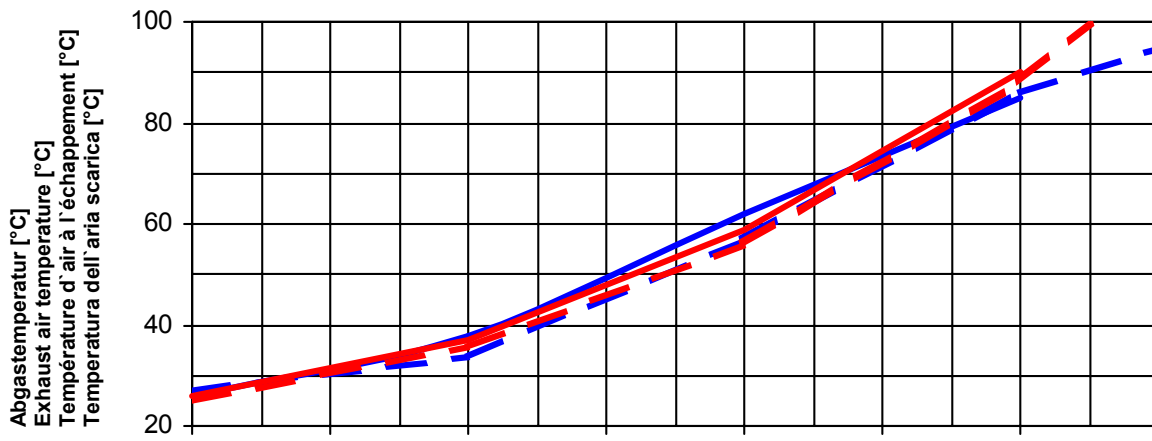
**3.**  
**Vakuumsicherheitsventil / Vacuum relief valve**  
**Soupape vide / Valvola vuoto**



**4.**  
**Ansaugfilter + Vakuumsicherheitsventil**  
**Suction filter + Vacuum relief valve**  
**Filtre aspiration + Soupape vide**  
**Filtro aspirazione + Valvola vuoto**

Type Type Type Tipo	Saugluftmenge Suction air rate Débit d'air aspiré Volume d'aria aspirata [m³/h] max.		Unterdruck Vacuum Vide Vuoto [mbar] max.		Installierte Motorleistung Motor capacity installed Puissance du moteur installé Potenza del motore installato [kW]		Motorspannung * Motor voltage * Voltage du moteur * Voltaggio del motore * [V]		Drehzahl [U/min] Speed [RPM] Vitesse de rotation [T/min] Velocità di rotazione [G/min]		
	50 Hz	60 Hz	50 Hz	60 Hz	50 Hz	60 Hz			50 Hz	60 Hz	
SV 8.130/2-01	65	75	-230	-155	0,55	0,66	190-255/330-440 50 Hz		2870	3460	
			-300	-270	0,75	0,90	+				
			-300	-350	1,25	1,50	190-290/330-500 60 Hz				
SV 8.160/2-01	75	95	-200	-210	0,75	0,90	190-255/330-440 50 Hz		2870	3460	
			-300	-325	1,25	1,50	+				
			-300	-325	1,50	1,50	190-290/330-500 60 Hz				
Type Type Type Tipo	c	d	h	k	1 Druckanschluss Pressure connection Raccord pression Raccordo pressione		2 Sauganschluss Suction connection Raccord aspiration Raccordo aspirazione		Schallpegel Noise level Niveau sonore Livello rumorosità [dB(A)]		Gewicht Weight Poids Peso [kg]
[mm]	[mm]	[mm]	[mm]					50 Hz	60 Hz		
SV 8.130/2-01	147	107	415	≤ 366	G 1 1/2 "		G 1 1/2 "		65	68	24,5
SV 8.160/2-01	155	115	423	≤ 370	G 1 1/2 "		G 1 1/2 "		71	72	24,5

Maßangaben in mm / Measures in mm / Mesures en mm / Misure in mm \* = Wechselstrom auf Anfrage / A.C. on request / C.A. sur demande / C.A. su domanda  
 Änderungen vorbehalten / Right of modification reserved / Sous réserve des modifications / Sotto riserva di modificazioni (09.10.03)



Bezugsdaten: Atmosphäre / Référence: Atmosphère /  
Riferimento: Atmosfera 1000 mbar, 20°C

Änderungen vorbehalten / Right of modification reserved /  
Sous réserve des modifications / Sotto riserva di modificazioni (17.02.03)